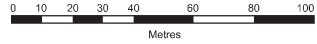
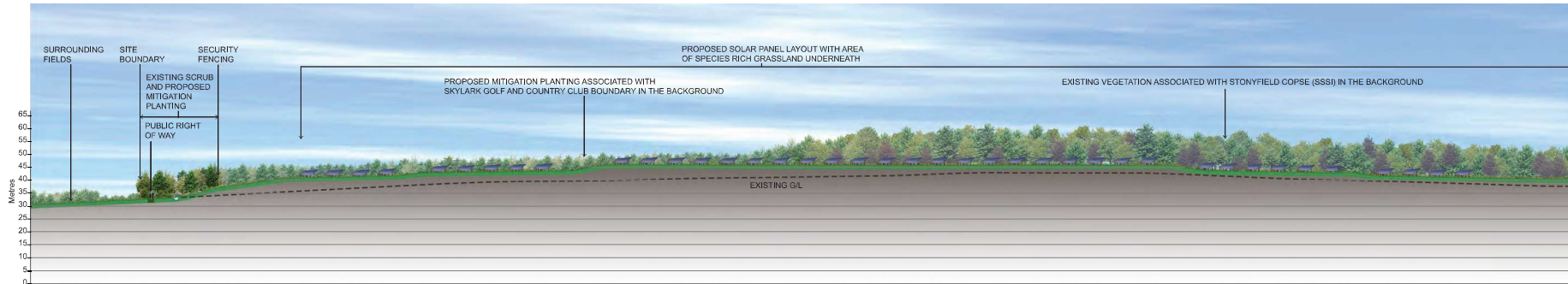


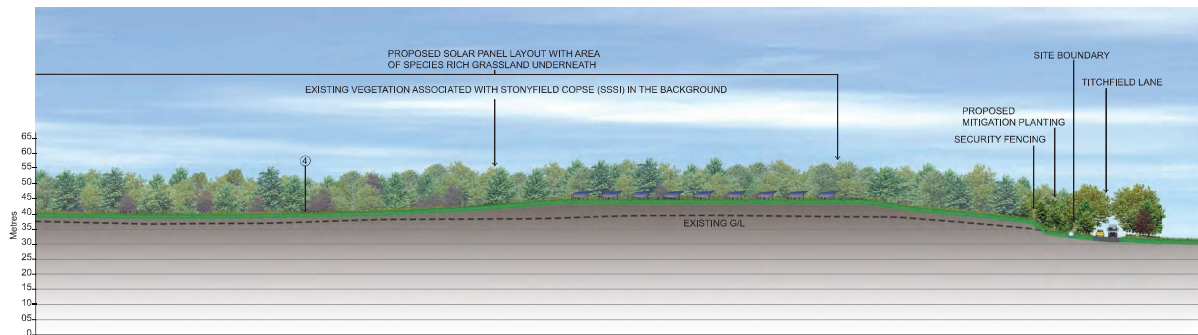
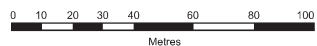
ILLUSTRATIVE SECTION AA: SHOWING SOUTH-NORTH PROFILE OF SOLAR FARM AREA WITH LANDSCAPE MITIGATION PROPOSALS.



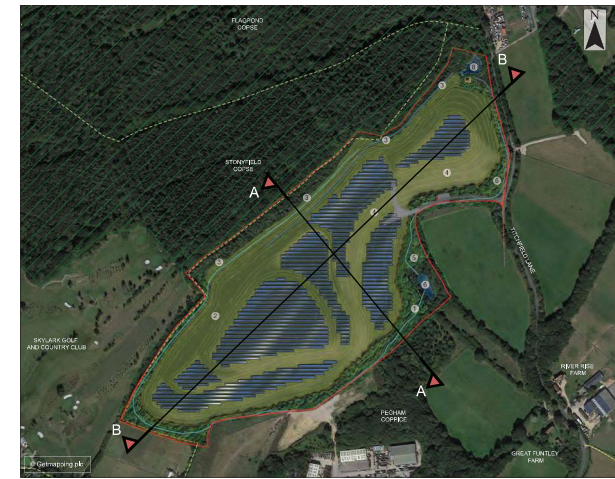
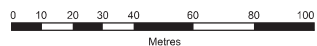
1. NEW NATIVE PLANTING WILL BUFFER AND EXTEND WOODLAND HABITATS THEREBY IMPROVING THE ECOLOGICAL FUNCTION AND CONNECTIVITY OF PEGHAM COPPICE SINC.
2. MORE OPEN AREAS OF GRASSLAND WILL RETAIN GROUND NESTING SPECIES SUCH AS SKYLARKS.
3. EXISTING VEGETATION WITHIN SSSI BUFFER ZONE TO BE RETAINED AS FAR AS POSSIBLE, AREAS OF OPEN RICH SPECIES GRASSLAND PROPOSED WITHIN SSSI BUFFER ZONE TO FUNCTION AS A REPTILE RECEPTOR, SSSI BUFFER ZONE AND REPTILE RECEPTOR AREA MANAGED THROUGH LEMP PRESCRIPTIONS.
4. SOUTH FACING GRASSLAND WILL BE MANAGED TO PROVIDE OPTIMUM HABITATS FOR INVERTEBRATES AND REPTILES ONCE THE SITE DEVELOPMENT HAS BEEN COMPLETED.
5. NEW PERIPHERAL PLANTING PROVIDES LINKAGES FOR WOODLAND TO THE NORTH (STONYFIELD COPSE) WITH PEGHAM COPPICE TO THE SOUTH.
6. SITE PONDS ARE ENHANCED FOR BIODIVERSITY IN ACCORDANCE WITH ATTENUATION FUNCTION.



ILLUSTRATIVE SECTION BB: SHOWING WEST-EAST PROFILE OF SOLAR FARM AREA WITH LANDSCAPE MITIGATION PROPOSALS.



ILLUSTRATIVE SECTION BB: SHOWING WEST-EAST PROFILE OF SOLAR FARM AREA WITH LANDSCAPE MITIGATION PROPOSALS CONTINUED.



ILLUSTRATIVE KEY PLAN WITH SECTION LOCATIONS AND MITIGATION PROPOSALS

41049200047293077_ILLUSTRATIVE CROSS SECTIONS_IG_201-04-08